

MONTHLY MEMBERSHIP PROGRESS REPORT

LOCATION PENNSYLVANIA

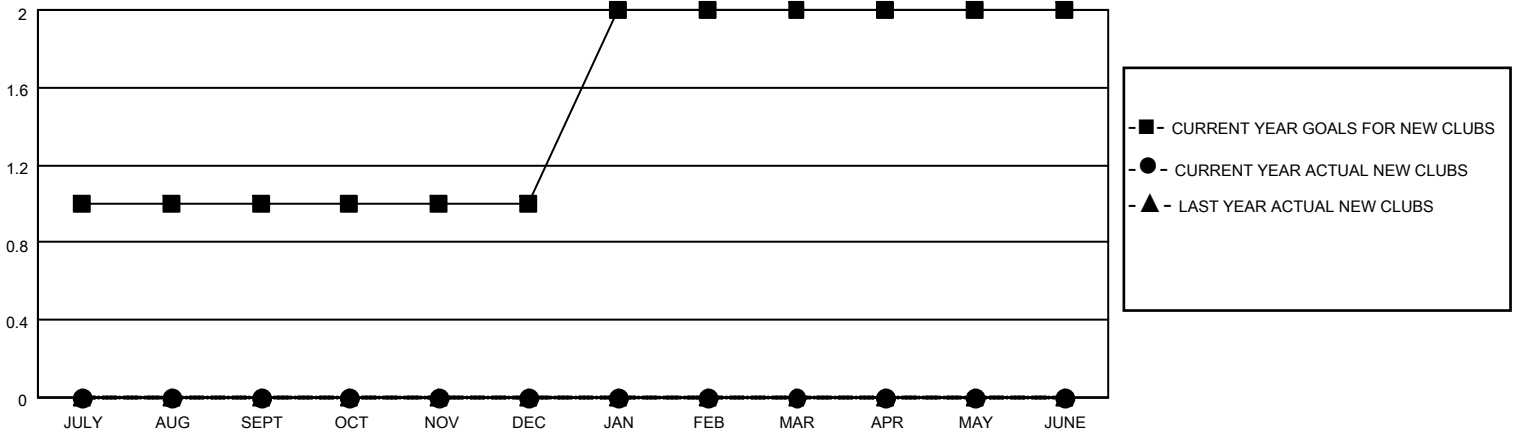
District 14 U

Results as of: 4/30/2023

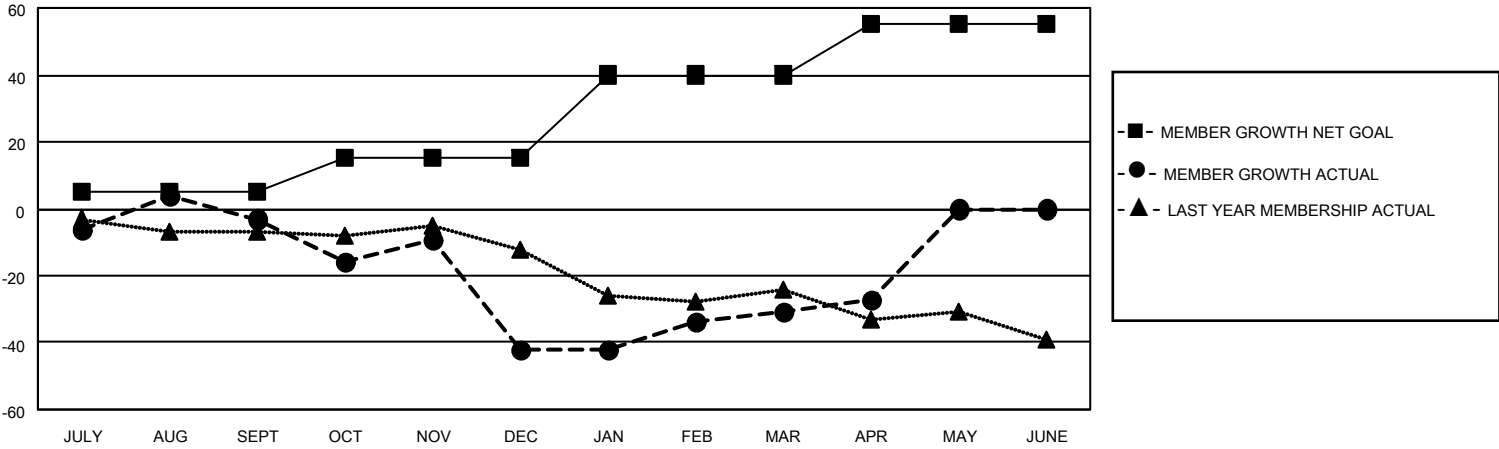
Clubs			
RESULTS FOR 2022-2023			
QUARTER	NEW CLUB GOAL	NEW CLUBS	DROPPED CLUBS
JULY/AUG/SEPT	1	0	0
OCT/NOV/DEC	0	0	2
JAN/FEB/MAR	1	0	0
APR/MAY/JUNE	0	0	0

Members			
RESULTS FOR 2022-2023			
QUARTER	MEMBER GROWTH NET GOAL	MEMBER GROWTH ACTUAL	DROPPED MEMBERS ACTUAL (including transfers)
JULY/AUG/SEPT	5	24	23
OCT/NOV/DEC	10	24	58
JAN/FEB/MAR	25	23	10
APR/MAY/JUNE	15	6	2

GOALS AND ACTUAL NEW CLUBS CUMULATIVE



GOALS AND ACTUAL MEMBERS CUMULATIVE



DROPPED CLUBS: 2	
<u>DROPPED MEMBERS</u>	
DECEASED	17
CLUB CANCELLED	11
OTHER	65
TOTAL	93

15 CLUBS OF 30 ADDED 1 OR MORE NEW MEMBERS

[CLICK HERE FOR CUMULATIVE MEMBERSHIP DATA](#)

<u>GENDER DISTRIBUTION</u>	
MALE	573 (65.56%)
FEMALE	301 (34.44%)
NON BINARY	0 (0.00%)
PREFER NOT TO ANSWER	0 (0.00%)
TOTAL FAMILY UNIT MEMBERS	187
FAMILY MEMBERS PAYING HALF DUES	95